

Sharing CGM data with Libreview



Sharing your Freestyle Libre 2 plus CGM data with a clinic

What is Libreview?


Libreview is a web-based cloud platform where you and your healthcare team can log in to view your Freestyle Libre continuous glucose monitor (CGM) data. You can connect directly from your Freestyle LibreLink app or upload your Freestyle Libre 2 reader using a USB cable and computer.

Sharing your CGM data with your healthcare team means they can easily review your glucose levels and help you adjust your diabetes treatment and medications. Using Libreview can also help facilitate remote virtual or phone follow up. This means you can have more frequent follow up and less face to face appointments.

Connecting to a practice from the Freestyle LibreLink app

You can share your CGM data to your healthcare teams Libreview clinic account using your LibreLink app.

Steps


1. Open LibreLink app > select ☰ menu on top left
2. Scroll down and select 'Connected apps' 
3. Next to Libreview select 'Connect' or 'Manage'
4. Select 'connect to a practice'
5. Enter practice ID: _____
6. Select 'next'
7. Confirm the practice > Select 'done'
8. Select 'back to connected clinics'

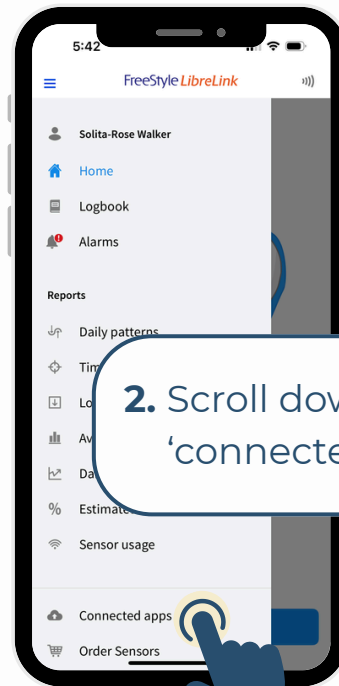
Sharing CGM data with Libreview



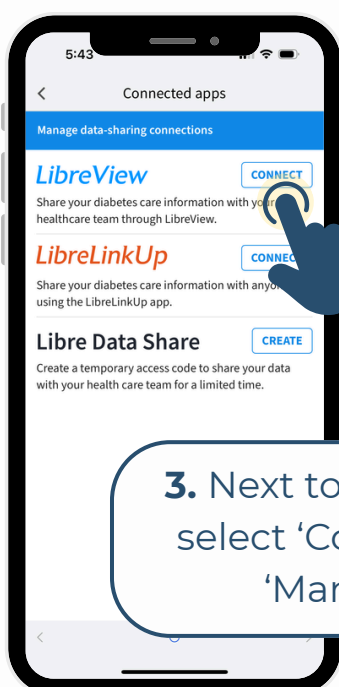
Sharing your Freestyle Libre 2 plus CGM data with a clinic



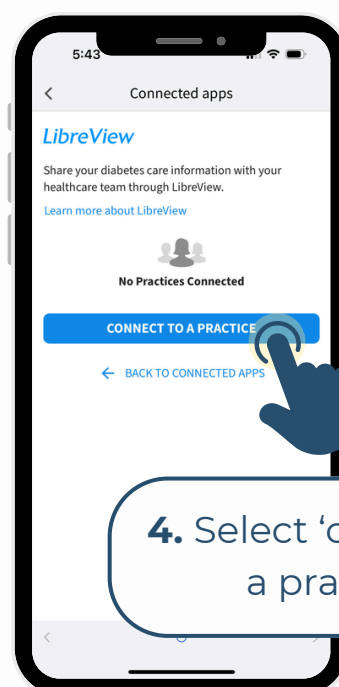
1. Open the Freestyle LibreLink app > select  menu on top left



2. Scroll down > select 'connected apps'



3. Next to Libreview select 'Connect' or 'Manage'

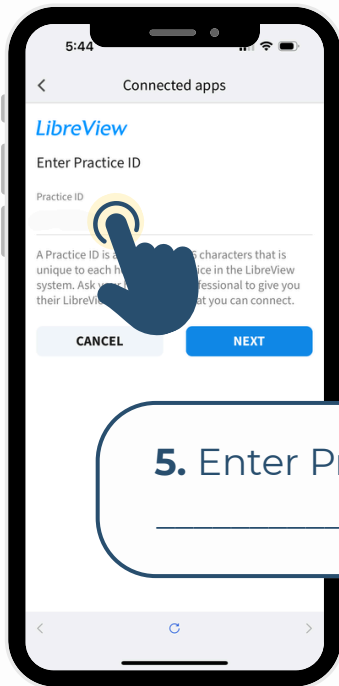


4. Select 'connect to a practice'

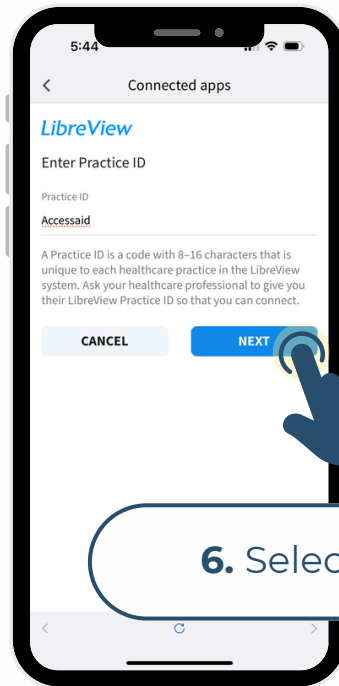
Sharing CGM data with Libreview



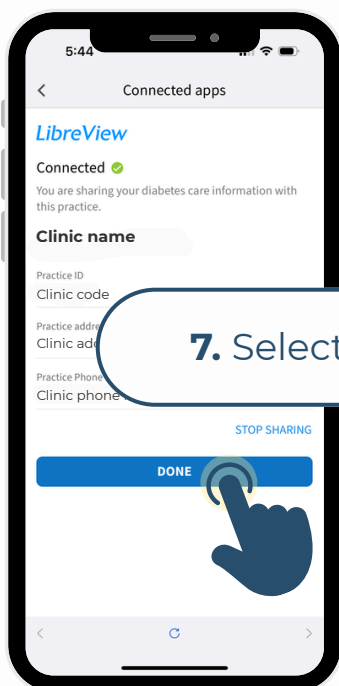
Sharing your Freestyle Libre 2 plus CGM data with a clinic



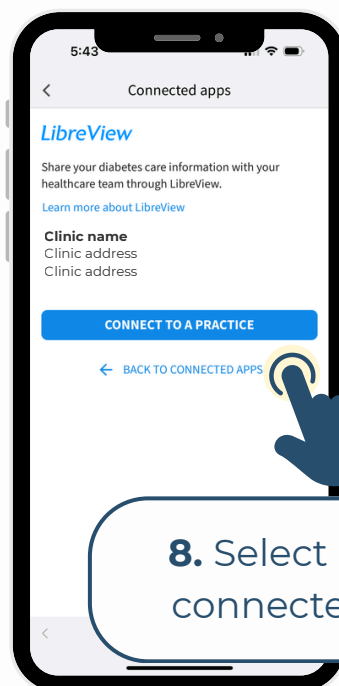
5. Enter Practice ID



6. Select next



7. Select 'done'



8. Select 'back to connected apps'